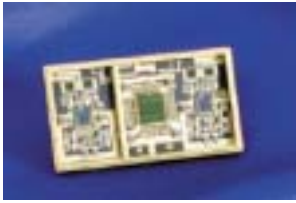
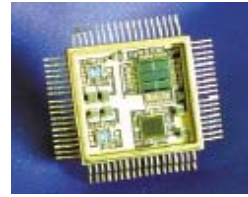


BU-65170/71
BU-61580/81/85/86



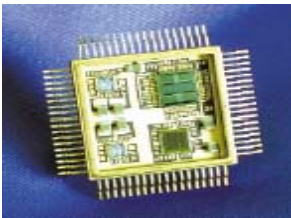
ACE 系列产品
典型封装: DIP
4K, 12K 或 8K x17 字的片内双口 RAM
自动的 BC 重试
可编程的 BC 间隔时间
BC 帧自动重试
灵活的 RT 数据缓存
可编程的非法化
可选的消息监控
RT/MT 同时操作方式

BU-65178/79
BU-61588/BU-61688/89



Mini-ACE 和 Mini-ACE+ 系列
典型封装: 扁平 F 或 G
功能兼容 ACE 系列产品
自动的 BC 重试
可编程的 BC 间隔时间
可编程的非法化
4K 或 64K 字的片内双口 RAM
支持 10/12/16/20 MHz 时钟
自动启动为 RT 功能
单 5V 电源供电

BU-61864/65
BU-61845
BU-61843



Enhanced Mini-ACE
典型封装: 扁平 F 或 G
兼容 ACE, Mini-ACE(+)
可选的 5V 或 3.3V 逻辑
综合的 BIT 功能
RT 功能: 中断状态队列
1/2 环型缓冲区中断
4K 或 64K 字片内双口 RAM
10,12,16,20 MHz 时钟

BU-62743
BU-62843
BU-62864



PCI Enhanced Mini-ACE
典型封装: 扁平 F 或 G
兼容 ACE, Mini-ACE (+),
Enhanced Mini-ACE
3.3V 逻辑
RT 功能: 中断状态队列
1/2 环型缓冲区中断
33 MHz 32-bit PCI 目标接口
4K 或 64K 字片内双口 RAM
10,12,16,20 MHz 时钟

常用的变压器器件:

1 型: B2203
2 型: B2385
3 型: B3067

BUS25679
BUS29854
B3226

TST-9002
TST-9001
TST-9007

DDC 公司 1553 协议芯片定货信息

BU-XXXXXXXX-XXXX

Supplemental Process Requirements:

- S = Pre-Cap Source Inspection
- L = Pull Test
- Q = Pull Test and Pre-Cap Inspection
- K = One Lot Date Code
- W = One Lot Date Code and Pre-Cap Source
- Y = One Lot Date Code and 100% Pull Test
- Z = One Lot Date Code, Pre-Cap Source and 100% Pull Test
- Blank = None of the Above

Test Criteria:

- 0 = Standard Testing
- 2 = MIL-STD-1760 Amplitude Compliant – Applies to +5Volt Transceiver Option Only

Process Requirements:

- 0 = Standard DDC practices, no Burn-In (See following page)
- 1 = MIL-PRF-38534 Compliant
- 2 = B
- 3 = MIL-PRF-38534 Compliant with PIND Testing
- 4 = MIL-PRF-38534 Compliant with Solder Dip
- 5 = MIL-PRF-38534 Compliant with PIND Testing and Solder Dip
- 6 = B with PIND Testing
- 7 = B with Solder Dip
- 8 = B with PIND Testing and Solder Dip
- 9 = Standard DDC Processing with Solder Dip, no Burn-In

Temperature Range/Data Requirements:

- 1 = -55°C to +125°C
- 2 = -40°C to +85°C
- 3 = 0°C to +70°C
- 4 = -55°C to +125°C with Variables Test Data
- 5 = -40°C to +85°C with Variables Test Data
- 8 = 0°C to +70°C with Variables Test Data

Voltage/Transceiver Option:

- 0 = Transceiverless
- 1 = +5 Volts and -15 Volts(1760 Compliant – Standard Configuration)
- 2 = +5 Volts and -12 Volts
- 3 = +5Volts only (See Test Criteria – 1760 Compliant with option -XX2)
- 5 = +5/+15/-15V Sinusoidal(McAir)
- 6 = +5Volts only with TX Inhibit inputs brought out on negative supply pins

Package Type:

- G = 'Gull Wing'(Formed Lead)
- J = J Lead(Solder DIP not available)
- P = PGA
- S = Small DIP
- V = Very Small Flat Pack

Product Type:

- 65170 = 70-pin RT
- 65171 = 70-pin RT with Latchable RT Address Option
- 61580 = 70-pin BC/RT/BM
- 61581 = 70-pin BC/RT/BM with Latchable RT Address Option
- 61585 = 70-pin BC/RT/BM 8K X 17 with RAM
- 61586 = 70-pin BC/RT/BM 8K X 17 with RAM and RT Address Option